

HOW TO GET THERE

HOW IT WORKS

WHAT IS INCLUDED

WHAT TO DO

WHERE TO BUY

Find out at [citycard.is](http://citycard.is)

24, 48, 72  
**Reasons**  
to enjoy Reykjavík

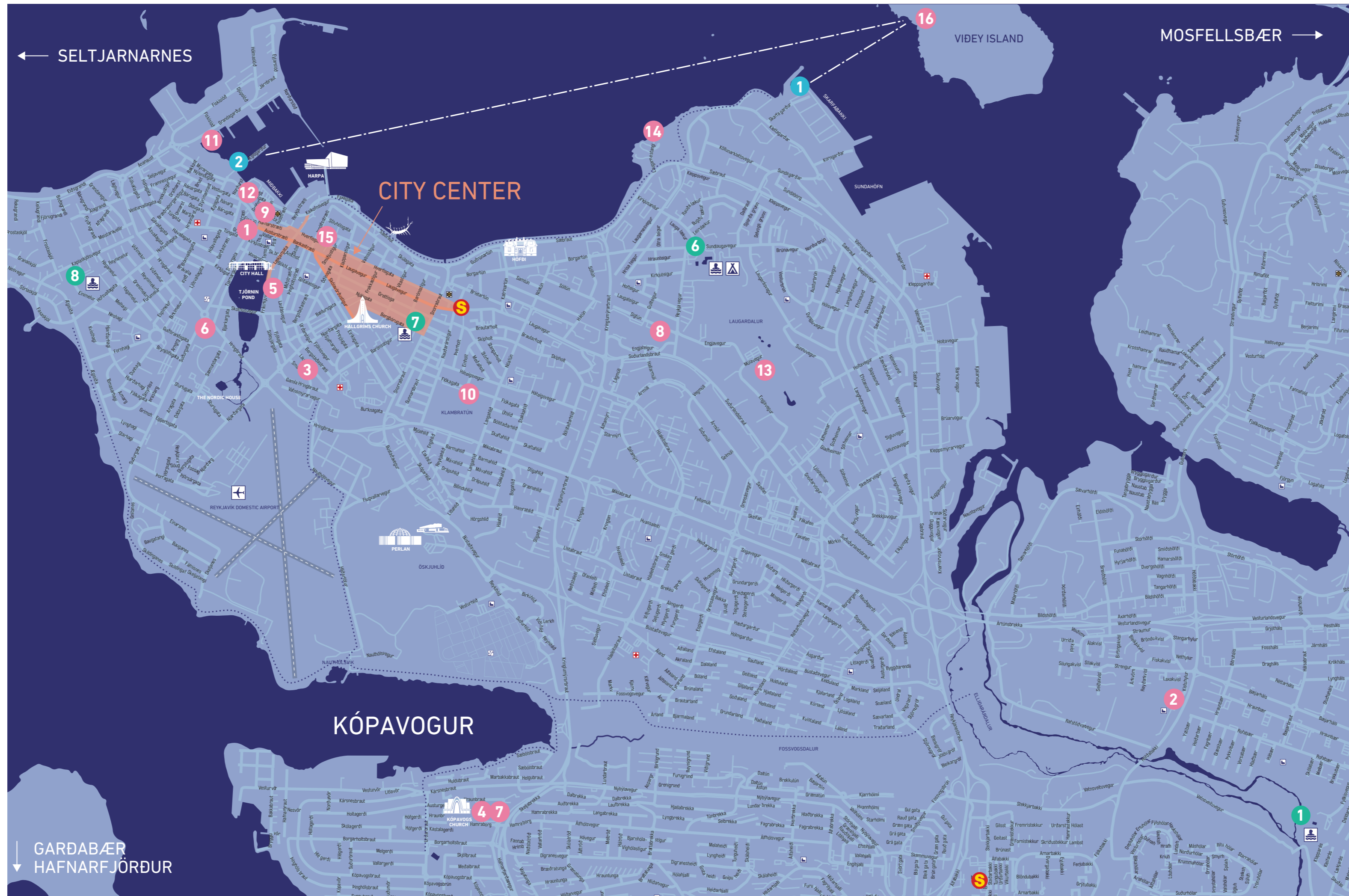


**Reykjavík**  
City Card



Get to know  
our favorite city  
the easy way and  
save money!

#visitreykjavik



- 1 Reykjavík City Museum **Aðalstræti**
- 2 Reykjavík City Museum **Árbær Open Air Museum**
- 3 **Ásgrímur Jónsson Collection**
- 4 Kópavogur Art Museum **Gerðarsafn**
- 5 **National Gallery of Iceland**
- 6 **National Museum of Iceland**
- 7 **Natural History Museum of Kópavogur**
- 8 Reykjavík Art Museum **Ásmundarsafn**
- 9 Reykjavík Art Museum **Hafnarhús**
- 10 Reykjavík Art Museum **Kjarvalsstaðir**
- 11 Reykjavík City Museum **Reykjavík Maritime Museum**
- 12 Reykjavík City Museum **Museum of Photography**
- 13 **Reykjavík Zoo and Family Park**
- 14 **Sigurjón Ólafsson Museum**
- 15 **The House of Collections**
- 16 Reykjavík City Museum **Viðey Island**

**Reykjavík City Thermal Pools**

- 1 **Árbæjarlaug**
- 2 **Breiðholtslaug**
- 3 **Dalslaug**
- 4 **Grafarvogslaug**
- 5 **Klébergslaug**
- 6 **Laugardalslaug**
- 7 **Sundhöllin**
- 8 **Vesturbæjarlaug**

- 1 **Elding, Skarfabakki Harbour**
- 2 **Elding, Ægisgarður Harbour**

**Reykjavík City Buses**

[visitreykjavik.is](http://visitreykjavik.is) Published May 2023. Subject to change without notice.





### Aðalstræti

Aðalstræti 16, 101 Reykjavík, tel. 411 6370, reykjavikcitymuseum.is

**The Settlement Exhibition**  
– step into the Viking Age

An open excavation where you can see the ruins of a Viking longhouse and learn about the settlement of Reykjavík.

**Reykjavík ... the story continues**

Family-friendly and informative exhibition about how Reykjavík grew from a farm to a city.

**Nearest bus stop: City Hall**  
**Number on map: 1**



### Árbær Open Air Museum

Kistuhylur 4, 110 Reykjavík, tel. 411 6300, reykjavikcitymuseum.is

This living museum takes you on a journey through time. The early history of Reykjavík is preserved in a series of lovingly restored homes, where you'll encounter costumed guides, grazing animals and traditional crafts. Exhibitions, demonstrations and tours reveal how Reykjavík came to life, from a few scattered farms to a vibrant capital city.

**Bus routes: 5 12 16**  
**Number on map: 2**



### Ásgrímur Jónsson Collection

Bergstaðastræti 74, 101 Reykjavík, tel. 515 9600, listasafn.is

Ásgrímur Jónsson was one of the pioneers of Icelandic art and the first Icelander to become a professional painter. The subjects of his paintings are mostly landscapes, particularly mountains. Some of his pictures also illustrate Icelandic sagas and folk tales.

**Nearest bus stop: Gamla Hringbraut**  
**Number on map: 3**



### Gerðarsafn

Hamraborg 4, 200 Kópavogur, tel. 4417600, gerdarsafn.is

Gerðarsafn offers temporary exhibitions with works by Icelandic and international contemporary artists, in addition to the museum's permanent collection. It was built in memory of artist Gerður Helgadóttir (1928–1975) and opened in 1994. Gerður Helgadóttir was a pioneer of three-dimensional abstract art and glass art in Iceland.

**Bus routes: 1 2 4 28 35**  
**Number on map: 4**



### National Gallery of Iceland

Frikkirkjuvegur 7, 101 Reykjavík, tel. 515 9600, listasafn.is

The National Gallery of Iceland has a wealth of valuable artworks on display, with various exhibitions by both Icelandic and foreign artists. The museum owns the most valuable collection of works by Icelandic artists in the country, including some works by internationally renowned artists.

**Bus route: 1**  
**Number on map: 5**



### National Museum of Iceland

Suðurgata 41, 102 Reykjavík, tel. 530 2200, nationalmuseum.is

The oldest museum in Iceland, established in 1863. Offers a variety of fascinating exhibitions and one permanent display lavishly illustrating the story of Iceland's past, from the Viking age to modern times. The main exhibition has more than 2,000 artifacts discovered in various parts of the country.

**Bus routes: 1 3 6 12 14**  
**Number on map: 6**



### Natural History Museum of Kópavogur

Hamraborg 6a, 200 Kópavogur, tel. 441 7200, natkop.is

Opened in May 2002, this museum is divided into two categories: geological and zoological. The geological part focuses on the formation of Iceland, the major rock types and minerals. The zoological part focuses (with a few exceptions) on Icelandic mammals, birds, fish and invertebrates.

**Bus routes: 1 2 4 28 35**  
**Number on map: 7**



### Reykjavík Art Museum – Ásmundarsafn

Sigtún, 105 Reykjavík, tel. 411 6430, artmuseum.is

Ásmundur's art greatly reflects his lifelong interest in the Icelandic sagas, folk tales and classical mythology. The building itself is a magnificent work of architecture. The museum serves to preserve his work and life and displays the largest collection of his sculptures both inside and outside the building.

**Bus routes: 2 5 15**  
**Number on map: 8**



### Reykjavík Art Museum – Hafnarhús

Tryggvagata 17, 101 Reykjavík, tel. 411 6400, artmuseum.is

This old harbour warehouse, built in the 1930s, now houses the permanent collection of works by Erró, one of Europe's most notable pop artists. The temporary shows at Hafnarhús tend toward the progressive and experimental, emphasising works from established contemporary artists.

**Nearest bus stop: Lækjartorg**  
**Number on map: 9**

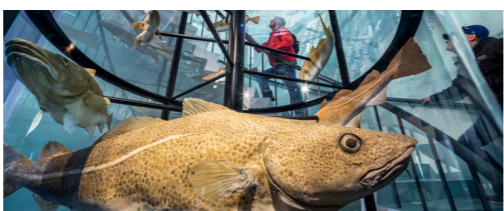


### Reykjavík Art Museum – Kjarvalsstaðir

Flókagata 24, 105 Reykjavík, tel. 411 6420, artmuseum.is

Named after the painter Jóhannes S. Kjarval (1885–1972), one of Iceland's most influential and recognised artists. His works are on permanent display there. The exhibitions at Kjarvalsstaðir focus primarily on paintings and sculptures of the established masters of modern art.

**Bus routes: 1 3 6 11**  
**Number on map: 10**

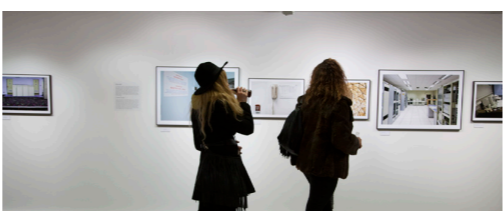


### Reykjavík Maritime Museum

Grandagarður 8, 101 Reykjavík, tel. 411 6340, reykjavikcitymuseum.is

The Reykjavík Maritime Museum explores Iceland's dramatic relationship with the sea. The survival of the Icelandic nation depended on generations of brave fishermen heading into the unknown. The museum's exhibitions and artifacts bring our ocean history to life, from battling the waves to the Cod Wars and beyond.

**Bus route: 14**  
**Number on map: 11**



### Reykjavík Museum of Photography

Grófarhús, Tryggvagata 15 (top floor), 101 Reykjavík, tel. 411 6390, reykjavikcitymuseum.is

Reflecting the contemporary, while archiving the past – this is Reykjavík's home of photography. Reykjavík's main photography museum offers an ongoing programme of contemporary and historical exhibitions and an onscreen archive of thousands of images from the past.

**Nearest bus stop: Lækjartorg**  
**Number on map: 12**



### Reykjavík Zoo and Family Park

Múlavegur 2, 104 Reykjavík, tel. 411 5900, mu.is

The Reykjavík Zoo and Family Park in Laugardalur valley is open all year. The Zoo includes Icelandic animals, both wild and domesticated, and an exhibition with exotic species. During summer, the park's playground equipment is open. In winter, there are also many fun options to enjoy.

**Nearest bus stop: Laugardalshöll**  
**Number on map: 13**



### Sigurjón Ólafsson Museum

Laugarmestangi 70, 105 Reykjavík, tel. 5532906, iso.is

The museum exhibits Sigurjón Ólafsson's (1908–1982) sculptures – alone or in dialogue with other artists – and is the research center of the artist's work. In addition to housing different exhibitions the museum sponsors various cultural programs, including weekly concerts in the summer.

**Bus route: 12 16**  
**Number on map: 14**



### The House of Collections

Hverfisgata 15, 101 Reykjavík, tel. 515 9600, listasafn.is

The exhibition „Resistance“ is an interdisciplinary exhibition for children of all ages, that bridges the gap between visual arts and science. The works in the exhibition are all in the collection of the National Gallery of Iceland.

**Bus routes: 1 3 6**  
**Number on map: 15**



### Viðey Island

Skarfabakki Harbour, 104 Reykjavík & Ægisgarður Harbour, 104 Reykjavík, tel. 4116360, reykjavikcitymuseum.is & Elding.is.

**Summer:** Daily from Skarfabakki Harbour and Old Harbour in the centre of Reykjavík.  
**Winter:** Weekends from Skarfabakki Harbour. Please note, you will need to collect your ferry ticket at the Elding office before departure.

**Bus routes: 12 16**  
**Number on map: 16**

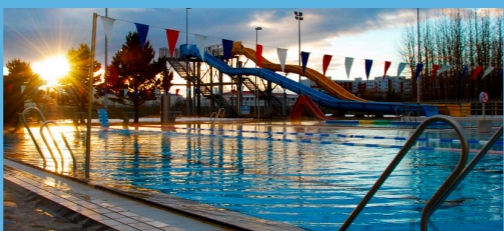
## Thermal pools

Experience pure thermal energy and take a dip in one of Reykjavík's many thermal pools and spas. Not only a great source of natural therapy but an important part of our culture and a tonic for the body and mind.



**Árbæjarlaug – Fylkisvegur, 110 Reykjavík, tel: 411 5200**  
reykjavik.is/arbaejarlaug

**Bus route: 5** **Number on map: 1**



**Breiðholtið – Austurberg, 111 Reykjavík, tel: 557 5547**  
reykjavik.is/breiðholtislaug

**Bus routes: 12 17** **Number on map: 2**



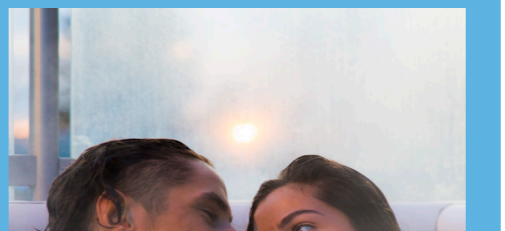
**Dalslaug – Úlfarsbraut 122-124, 113 Reykjavík, tel: 411 5650**  
reykjavik.is/dalslaug  
**Nearest bus stop: Úlfarsbraut.**

**Number on map: 3**



**Gröfuvogslaug – Dalhús, 112 Reykjavík, tel: 411 5300**  
reykjavik.is/grafarvogslaug

**Bus route: 6** **Number on map: 4**



**Klebergslaug – Kjalarnes, 116 Reykjavík, tel: 566 6879**  
reykjavik.is/klebergslaug

**Bus route: 57** **Number on map: 5**



**Laugardalslaug – Sundlaugarvegur, 104 Reykjavík, tel: 411 5100**  
reykjavik.is/laugardalslaug

**Bus routes: 12 14** **Number on map: 6**



**Sundhöllin – Barónsstígur, 101 Reykjavík, tel: 411 5350**  
reykjavik.is/sundholl-reykjavikur

**Nearest bus stop: Heilsuverndarstöðin**

**Number on map: 7**



**Vesturbæjarlaug – Hofsvallagata, 107 Reykjavík, tel: 411 5150**  
reykjavik.is/vesturbaejarlaug

**Bus routes: 11 13** **Number on map: 8**

## Discounts

Also included in the Reykjavík City Card are some wallet-friendly discounts to various interesting locations and activities within the city. Reykjavík City Card holders also get discounts at various restaurants, shops and cafés, and tours that operate within the city centre.

Find out more about discounts included in the Reykjavík City Card at [www.citycard.is](http://www.citycard.is)

## HOW TO GET THERE



### Strætó Reykjavík City Buses

Public buses in Iceland are called Strætó and the ticketing system is called Klappid. You can easily plan your travel with public transport when exploring the city with the **Klappid app** or at **bus.is**. Download the Klappid app for free in App Store or Google Play.



**KLAPP bus.is**